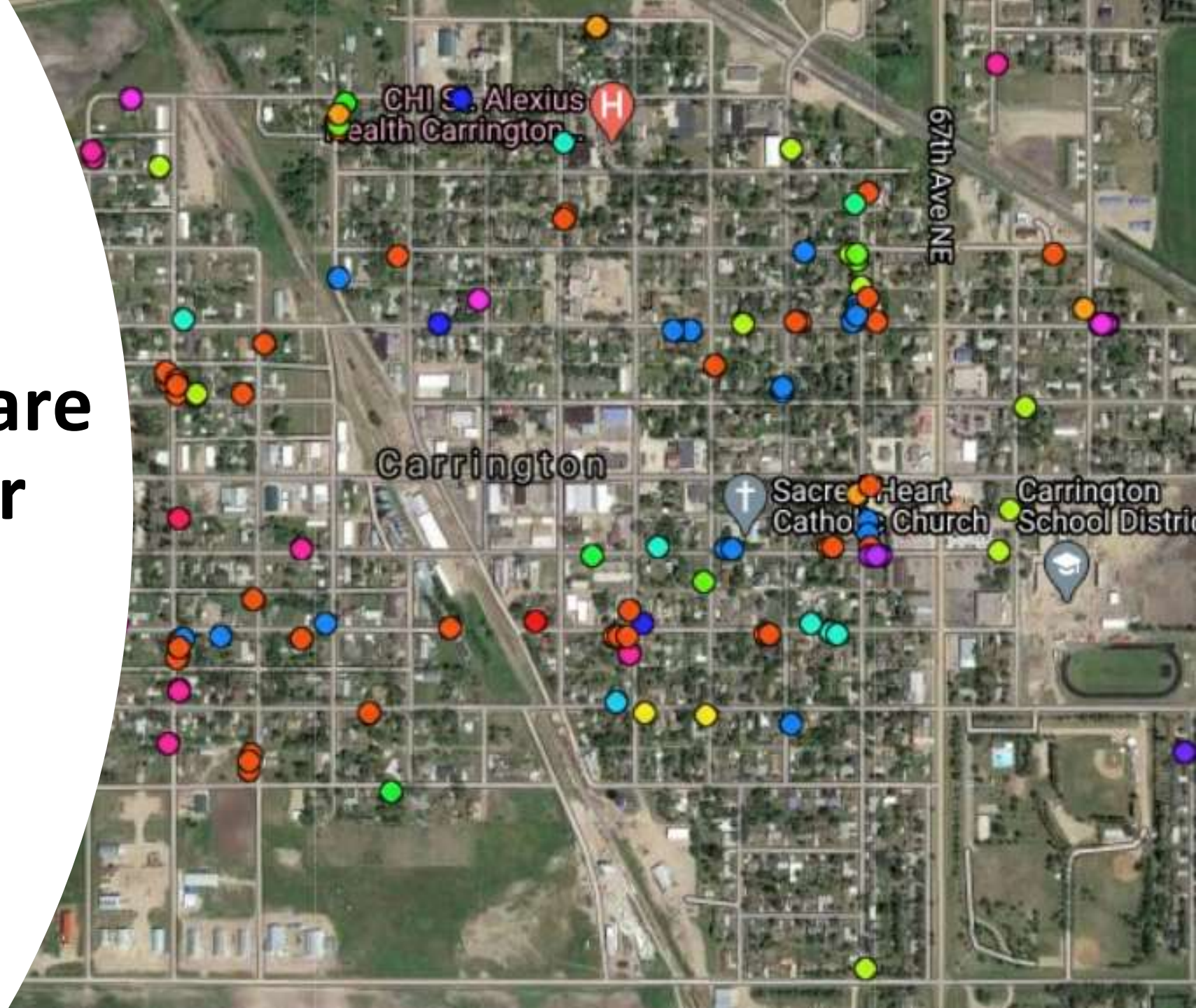


Maps of City
Trees **OTHER**
than Ash that are
Poor, Very Poor
or Dead

Carrington,
North Dakota



- The tree survey was completed in September 2019 using the **North Dakota Community Tree Inventory/Planning Tool (ND TIP Tool)**.
 - The ND TIP Tool is a project of the North Dakota Forest Service (NDFS) and North Dakota Urban and Community Forestry Association (NDUCFA) made possible through a grant from the USDA Forest Service.
- This survey was completed to give the City an idea of the kinds of trees that make up our urban forest and its relative health.
- The goal of the survey was to help decide which trees to target for replacement in the coming years.
- **This assessment is ONLY A GUIDE!**
- It's possible there are mistakes or misplaced trees – or trees may already have been removed.

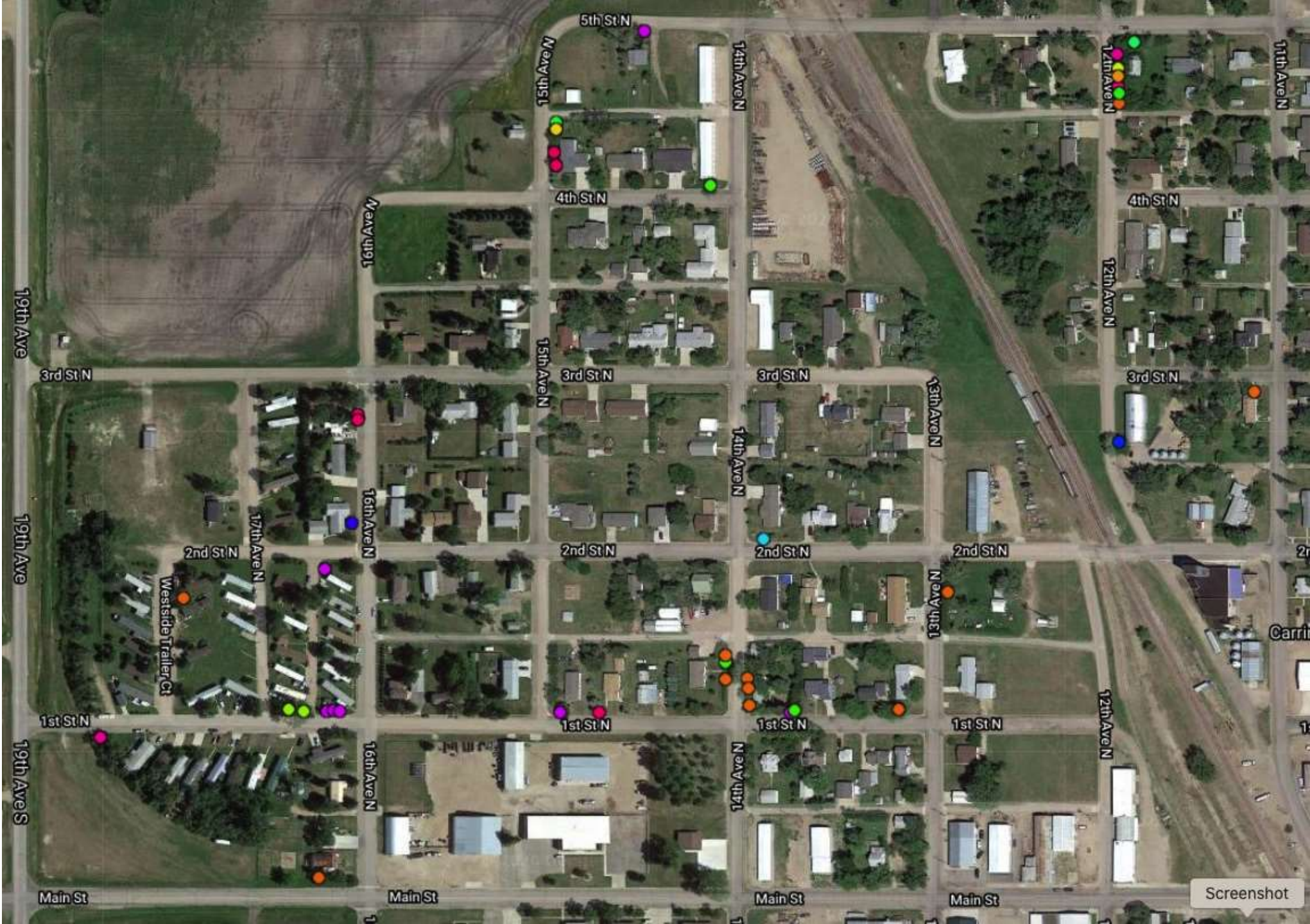
The city map was broken into nine areas so that you can see the marked trees more clearly.

The numbers indicate the slide numbers that follow.



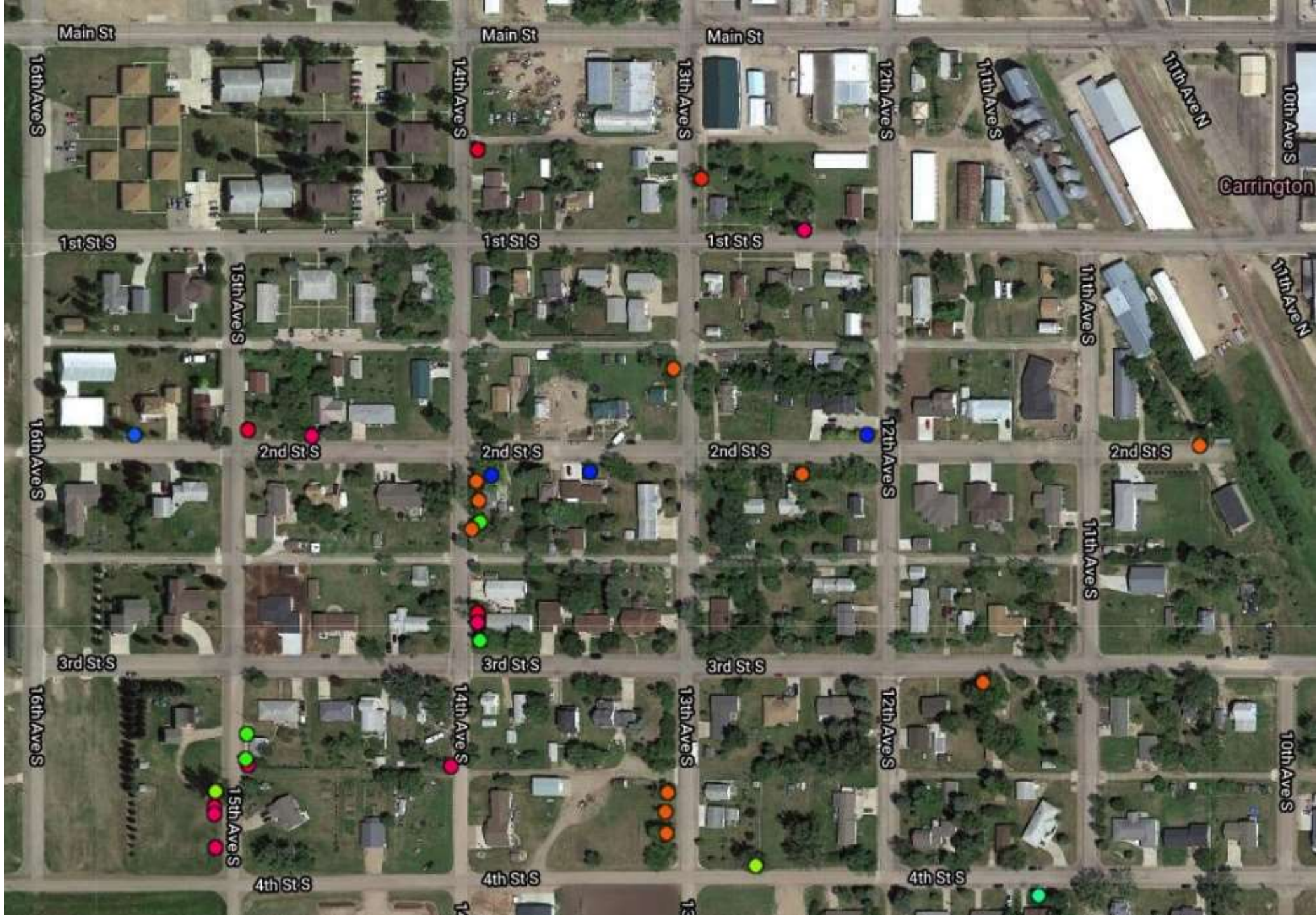
1

- Apple
- Birch, European white
- Boxelder (40)
- Buckthorn
- Cherry
- Chokecherry (5)
- Cottonwood (7)
- Crabapple (2)
- Elm, American (14)
- Elm, Siberian (4)
- Fir (2)
- Lilac
- Linden, littleleaf (2)
- Maple, amur
- Maple, freeman (6)
- Maple, Norway
- Maple, red
- Maple, silver (21)
- Maple, sugar
- Mountain-ash, European (4)
- Oak, bur
- Oak, northern pin (3)
- Poplar cultivars (12)
- Poplar, white
- Russian-olive (3)
- Spruce, Colorado blue (15)
- Willow (3)



2

- Apple
- Birch, European white
- Boxelder (40)
- Buckthorn
- Cherry
- Chokecherry (5)
- Cottonwood (7)
- Crabapple (2)
- Elm, American (14)
- Elm, Siberian (4)
- Fir (2)
- Lilac
- Linden, littleleaf (2)
- Maple, amur
- Maple, freeman (6)
- Maple, Norway
- Maple, red
- Maple, silver (21)
- Maple, sugar
- Mountain-ash, European (4)
- Oak, bur
- Oak, northern pin (3)
- Poplar cultivars (12)
- Poplar, white
- Russian-olive (3)
- Spruce, Colorado blue (15)
- Willow (3)



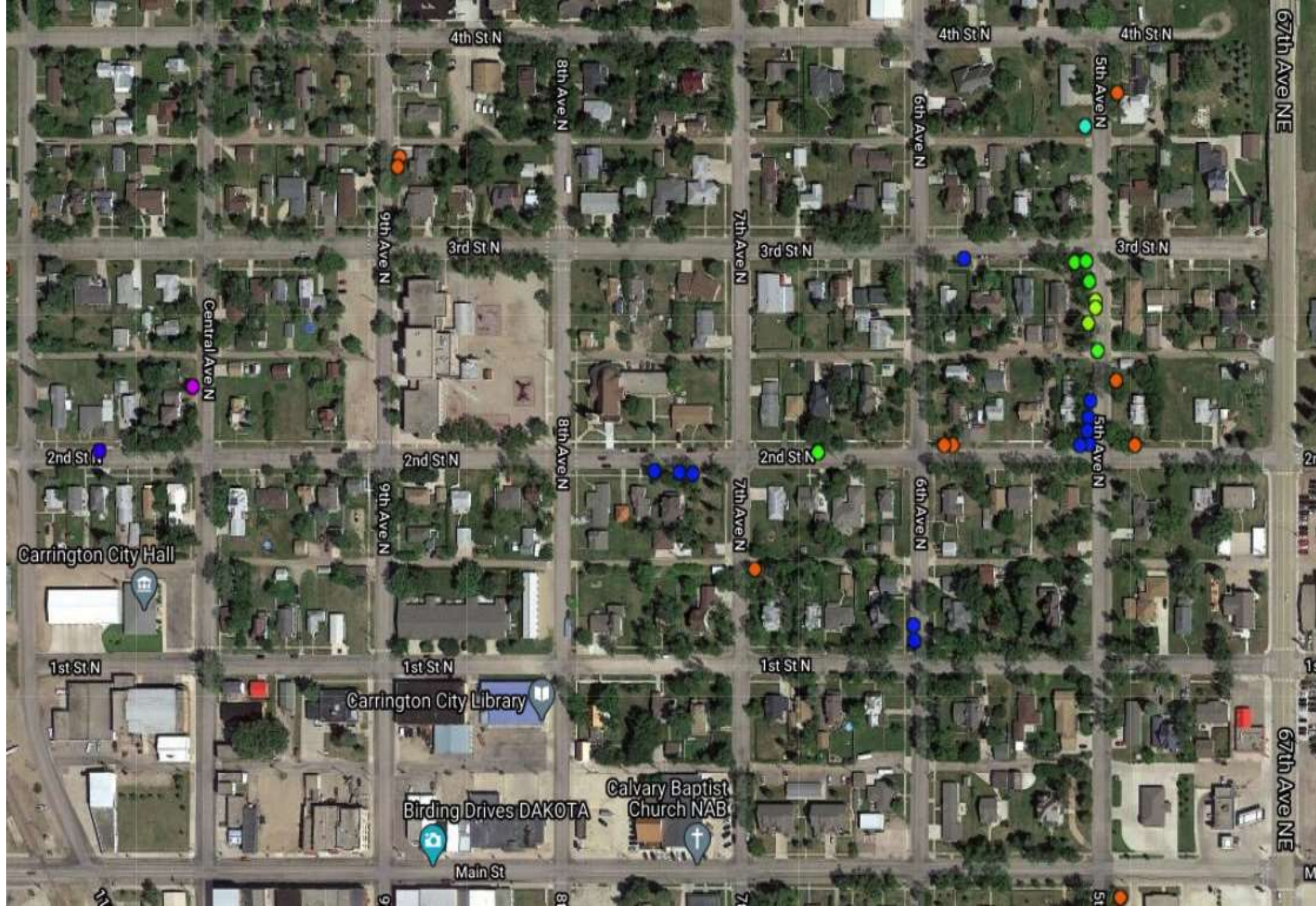
3

- Apple
- Birch, European white
- Boxelder (40)
- Buckthorn
- Cherry
- Chokecherry (5)
- Cottonwood (7)
- Crabapple (2)
- Elm, American (14)
- Elm, Siberian (4)
- Fir (2)
- Lilac
- Linden, littleleaf (2)
- Maple, amur
- Maple, freeman (6)
- Maple, Norway
- Maple, red
- Maple, silver (21)
- Maple, sugar
- Mountain-ash, European (4)
- Oak, bur
- Oak, northern pin (3)
- Poplar cultivars (12)
- Poplar, white
- Russian-olive (3)
- Spruce, Colorado blue (15)
- Willow (3)



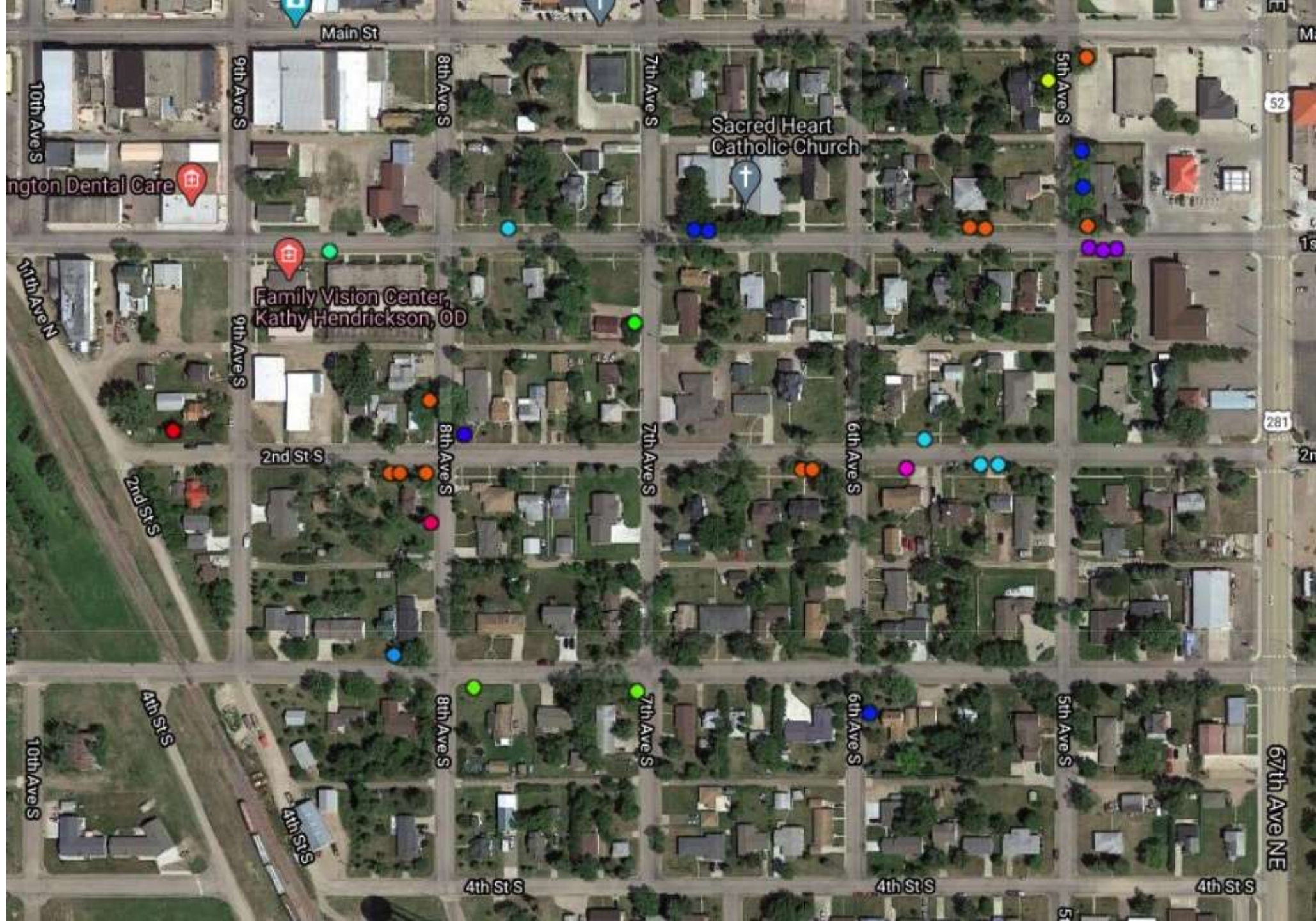
4

- Apple
- Birch, European white
- Boxelder (40)
- Buckthorn
- Cherry
- Chokecherry (5)
- Cottonwood (7)
- Crabapple (2)
- Elm, American (14)
- Elm, Siberian (4)
- Fir (2)
- Lilac
- Linden, littleleaf (2)
- Maple, amur
- Maple, freeman (6)
- Maple, Norway
- Maple, red
- Maple, silver (21)
- Maple, sugar
- Mountain-ash, European (4)
- Oak, bur
- Oak, northern pin (3)
- Poplar cultivars (12)
- Poplar, white
- Russian-olive (3)
- Spruce, Colorado blue (15)
- Willow (3)



5

- Apple
- Birch, European white
- Boxelder (40)
- Buckthorn
- Cherry
- Chokecherry (5)
- Cottonwood (7)
- Crabapple (2)
- Elm, American (14)
- Elm, Siberian (4)
- Fir (2)
- Lilac
- Linden, littleleaf (2)
- Maple, amur
- Maple, freeman (6)
- Maple, Norway
- Maple, red
- Maple, silver (21)
- Maple, sugar
- Mountain-ash, European (4)
- Oak, bur
- Oak, northern pin (3)
- Poplar cultivars (12)
- Poplar, white
- Russian-olive (3)
- Spruce, Colorado blue (15)
- Willow (3)



6

- Apple
- Birch, European white
- Boxelder (40)
- Buckthorn
- Cherry
- Chokecherry (5)
- Cottonwood (7)
- Crabapple (2)
- Elm, American (14)
- Elm, Siberian (4)
- Fir (2)
- Lilac
- Linden, littleleaf (2)
- Maple, amur
- Maple, freeman (6)
- Maple, Norway
- Maple, red
- Maple, silver (21)
- Maple, sugar
- Mountain-ash, European (4)
- Oak, bur
- Oak, northern pin (3)
- Poplar cultivars (12)
- Poplar, white
- Russian-olive (3)
- Spruce, Colorado blue (15)
- Willow (3)



7

- Apple
- Birch, European white
- Boxelder (40)
- Buckthorn
- Cherry
- Chokecherry (5)
- Cottonwood (7)
- Crabapple (2)
- Elm, American (14)
- Elm, Siberian (4)
- Fir (2)
- Lilac
- Linden, littleleaf (2)
- Maple, amur
- Maple, freeman (6)
- Maple, Norway
- Maple, red
- Maple, silver (21)
- Maple, sugar
- Mountain-ash, European (4)
- Oak, bur
- Oak, northern pin (3)
- Poplar cultivars (12)
- Poplar, white
- Russian-olive (3)
- Spruce, Colorado blue (15)
- Willow (3)



8

- Apple
- Birch, European white
- Boxelder (40)
- Buckthorn
- Cherry
- Chokecherry (5)
- Cottonwood (7)
- Crabapple (2)
- Elm, American (14)
- Elm, Siberian (4)
- Fir (2)
- Lilac
- Linden, littleleaf (2)
- Maple, amur
- Maple, freeman (6)
- Maple, Norway
- Maple, red
- Maple, silver (21)
- Maple, sugar
- Mountain-ash, European (4)
- Oak, bur
- Oak, northern pin (3)
- Poplar cultivars (12)
- Poplar, white
- Russian-olive (3)
- Spruce, Colorado blue (15)
- Willow (3)



9

- Apple
- Birch, European white
- Boxelder (40)
- Buckthorn
- Cherry
- Chokecherry (5)
- Cottonwood (7)
- Crabapple (2)
- Elm, American (14)
- Elm, Siberian (4)
- Fir (2)
- Lilac
- Linden, littleleaf (2)
- Maple, amur
- Maple, freeman (6)
- Maple, Norway
- Maple, red
- Maple, silver (21)
- Maple, sugar
- Mountain-ash, European (4)
- Oak, bur
- Oak, northern pin (3)
- Poplar cultivars (12)
- Poplar, white
- Russian-olive (3)
- Spruce, Colorado blue (15)
- Willow (3)

